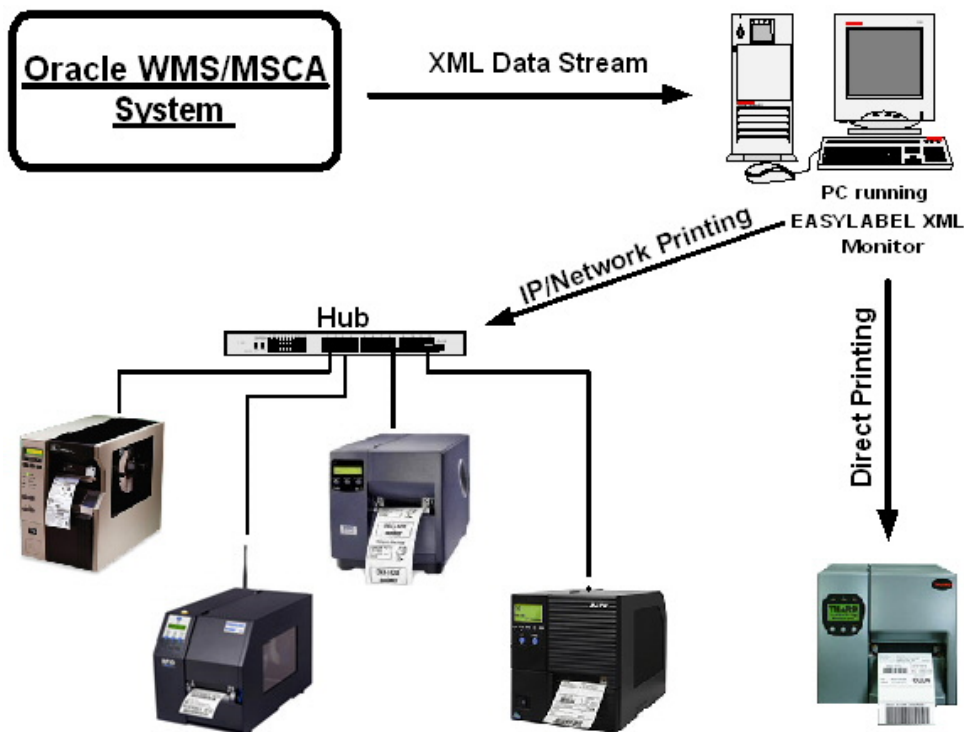


# Printing Bar Code and RFID Labels from Oracle

## Overview

The EASYLABEL® XML Monitor allows you to automatically print to your current label and RFID printers from an Oracle WMS/MSCA system. A direct connection between an Oracle WMS/MSCA system and the EASYLABEL XML Monitor is created with XML messages sent from an Oracle WMS/MSCA system. The EASYLABEL XML Monitor can receive these XML messages by monitoring a specified folder in which an XML file is dropped. The data contained in an XML file will then be used to populate the variable fields on previously designed label formats, determine the printer(s) that will be used to print the labels and the number of labels to print.



## Advantages

- The ability to use EASYLABEL's WYSIWYG label design tools
- The ability to print to any printer directly supported by EASYLABEL or any Windows printer
- The ability to issue a print request from an Oracle WMS/MSCA system as part of an automatic business flow
- The ability to use graphics and TrueType fonts on your labels

## **Requirements**

The following are the requirements for the PC running the EASYLABEL XML Monitor.

- EASYLABEL Platinum
- EASYLABEL Version 5.5 or higher
- Windows 2000 or higher
- Microsoft .NET framework. The .NET framework can be installed from the EASYLABEL installation CD or downloaded for free from Microsoft at the following URL: [windowsupdate.microsoft.com](http://windowsupdate.microsoft.com)

## **Implementation**

The EASYLABEL XML Monitor can be installed when EASYLABEL is installed or separately after EASYLABEL has been installed. EASYLABEL version 5.5 or higher is required to use the XML Monitor. Three (3) printer 'seats' are included with EASYLABEL Platinum. This allows an unlimited amount of users to send XML print jobs generated by Oracle to three of the printers defined in EASYLABEL. Up to 255 printer seats per system are available in increments of 10, 25 and 252.

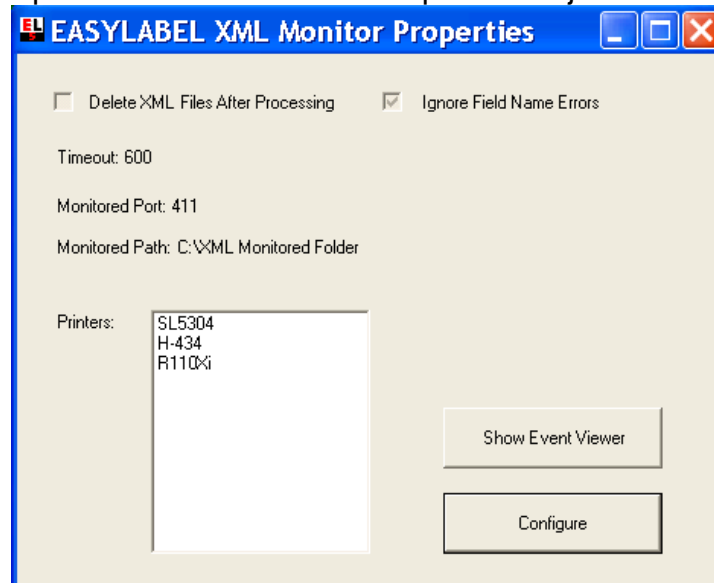
### **EASYLABEL Label Format Configuration**

When designing your label formats in EASYLABEL, every field that uses "When Printed" as the source of data can be populated with data from an XML file. The following criteria need to be met in order for an XML file to populate and print EASYLABEL formats:

1. The format name in the XML file has to specify the path and name of the EASYLABEL format.
2. The variable names in the XML file have to match the "When Printed" field names of the EASYLABEL format. EASYLABEL field names cannot contain dashes (-), which means that underscores ( \_ ) have to be used instead of dashes. If a variable field name in an XML file contains dashes, EASYLABEL will automatically convert them to underscores.
3. The printer name in the XML file has to match the EASYLABEL printer name.

## EASYLABEL XML Monitor Configuration

Start the EASYLABEL XML Monitor and double-click on the XML Monitor icon in the taskbar notification area to open the EASYLABEL XML Monitor Properties page. You can also right-click on the EASYLABEL XML Monitor and select “Properties” from the pop-up menu. On the property page is a summary of the current settings for the EASYLABEL XML Monitor including the monitored path, timeout, and the printers that will be used to print XML jobs.



You can change the EASYLABEL XML Monitor settings by clicking the “Configure” button and following the steps outlined below:

1. Click “Next” to continue.
2. Select the printers that should be used to print XML jobs from the list of named printers set up in EASYLABEL. The configuration wizard will tell you how many printers you can select.
3. Click “Next” to continue.
4. Enter or browse for the monitored path. This is the path to the directory that you want the EASYLABEL XML Monitor to ‘watch’ for XML files being modified or dropped.
5. Finally, set the option if you want to have the XML files deleted after processing.
6. Click “Next” to continue.
7. You will be presented with the EASYLABEL XML Monitor Setup Summary page.
8. Click “Back” to change any of the options or click “Next” to continue.
9. The configuration wizard is now finished.
10. Click the “Finish” button to set the EASYLABEL XML Monitor options.

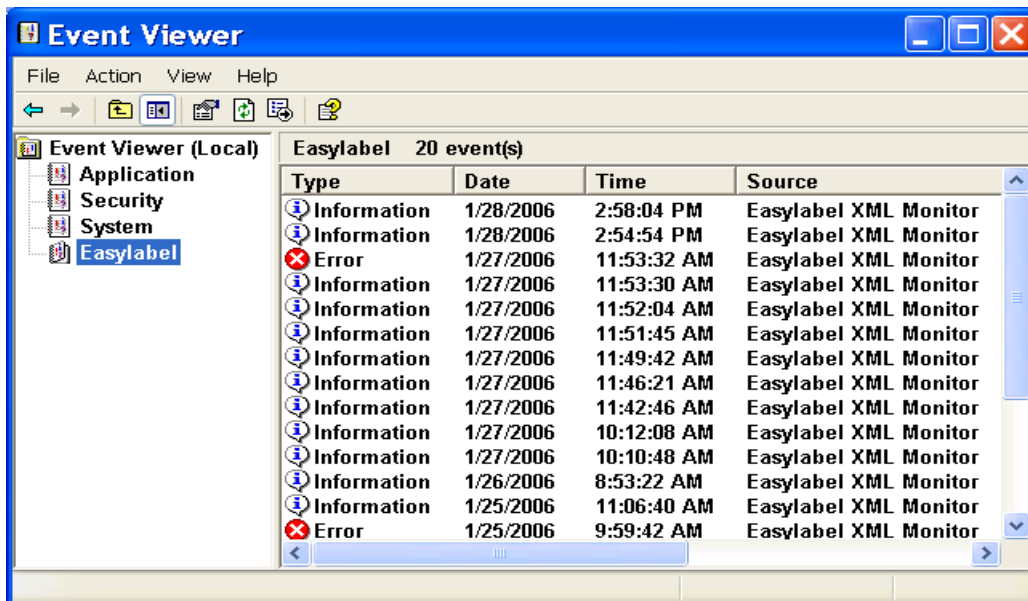
## Printing Procedure

1. Start the EASYLABEL XML Monitor by double-clicking on the XML Monitor icon in the taskbar notification area.
2. From the Oracle WMS/MSCA system, generate the print job using the output option 'XML'.
3. Send the XML print job to a folder/directory that is monitored by the EASYLABEL XML Monitor.
4. EASYLABEL will automatically populate label formats with the data sent from the Oracle WMS/MSCA system.
5. EASYLABEL will automatically print your labels on the specified printer.

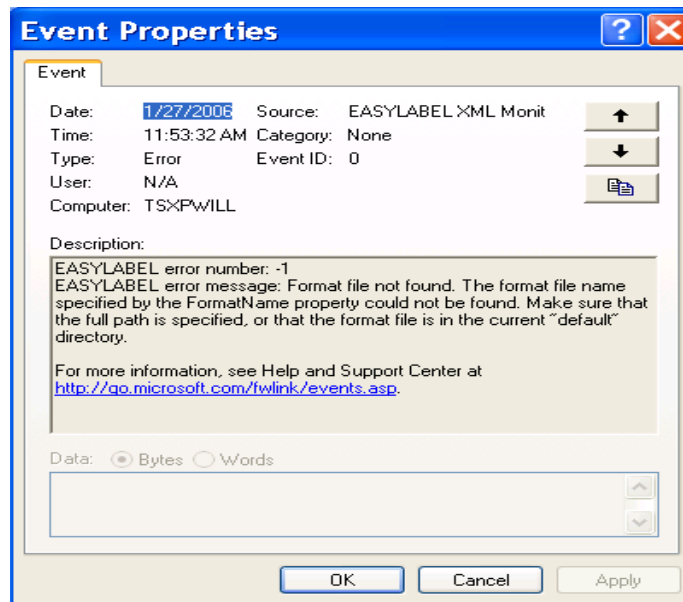
More specific information regarding the implementation of XML label printing from within an Oracle WMS/MSCA system is available in Chapter Ten of the "Oracle Warehouse Management Implementation Guide" provided by Oracle.

## Troubleshooting

The EASYLABEL XML Monitor writes a log to the Windows Event Viewer, which includes every successful and failed XML print request received by the EASYLABEL XML Monitor. To view this log, open the EASYLABEL XML Monitor Properties window and click on the Event Viewer button. Now select EASYLABEL from within the Event Viewer and you will be able to review the status information of every XML file processed by the EASYLABEL XML Monitor.



The Event Viewer will let you know if there was an error processing an XML file and by double-clicking on the error with the appropriate time stamp you will be able to review the cause of the XML processing error.



## **Summary**

The EASYLABEL XML Monitor provides an easy to implement solution for printing bar code and RFID labels directly from an Oracle WMS/MSCA system. This solution does not require special XML label printers or the need for custom programming. It also allows you to design your label templates using the EASYLABEL label design software and print your labels based on a manually or automatically triggered print request from an Oracle WMS/MSCA system.