

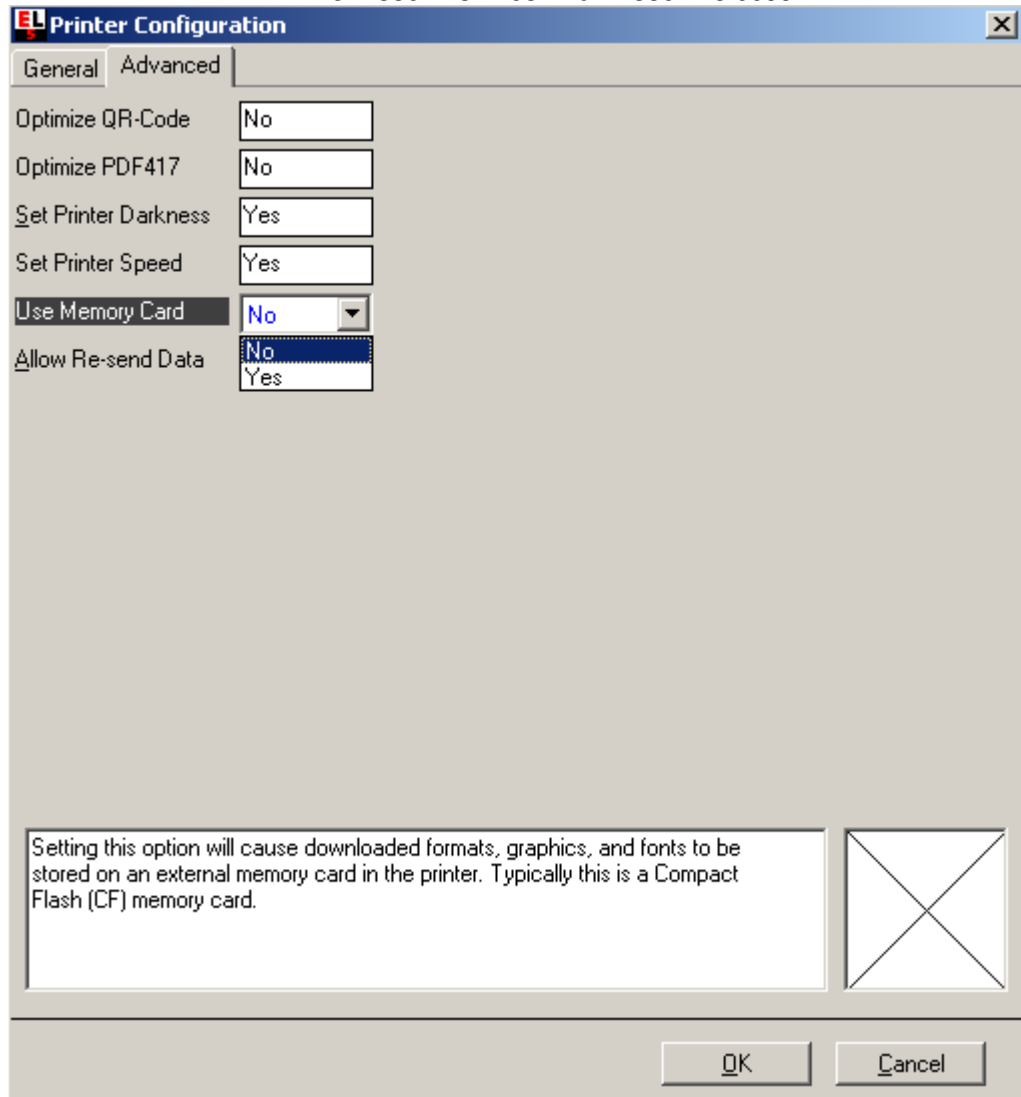
Stand Alone Printing

This White Paper was written to familiarize the user with the Stand Alone Printing process using the Tharo H-Series printer and the EASYLABEL software program*. It is possible to download label formats, databases, serial files and images to the flash memory of the printer or to an optional Compact Flash card. To use a Compact Flash (CF) card simply insert it into the Compact Flash slot in the back of the printer, disconnect the printer from the PC and print labels using only the printer and a standard PS/2 keyboard.

*** EASYLABEL Start does not support downloading to the H-Series memory. EASYLABEL Silver does not support downloading databases or serial files to the H-Series memory.**

- **Configuring the Printer**

To edit the printer configuration in the EASYLABEL program, click the Advanced tab in the Printer Configuration window and look at the Use Memory Card option. If it is set to NO, EASYLABEL will download files to the printer's internal flash memory. If it is set to YES, EASYLABEL will download files to the optional Compact Flash card. Be sure the printer is configured to use a serial port or a bi-directional USB port. *Do not use the parallel port when downloading to the printer memory or optional CF card.*

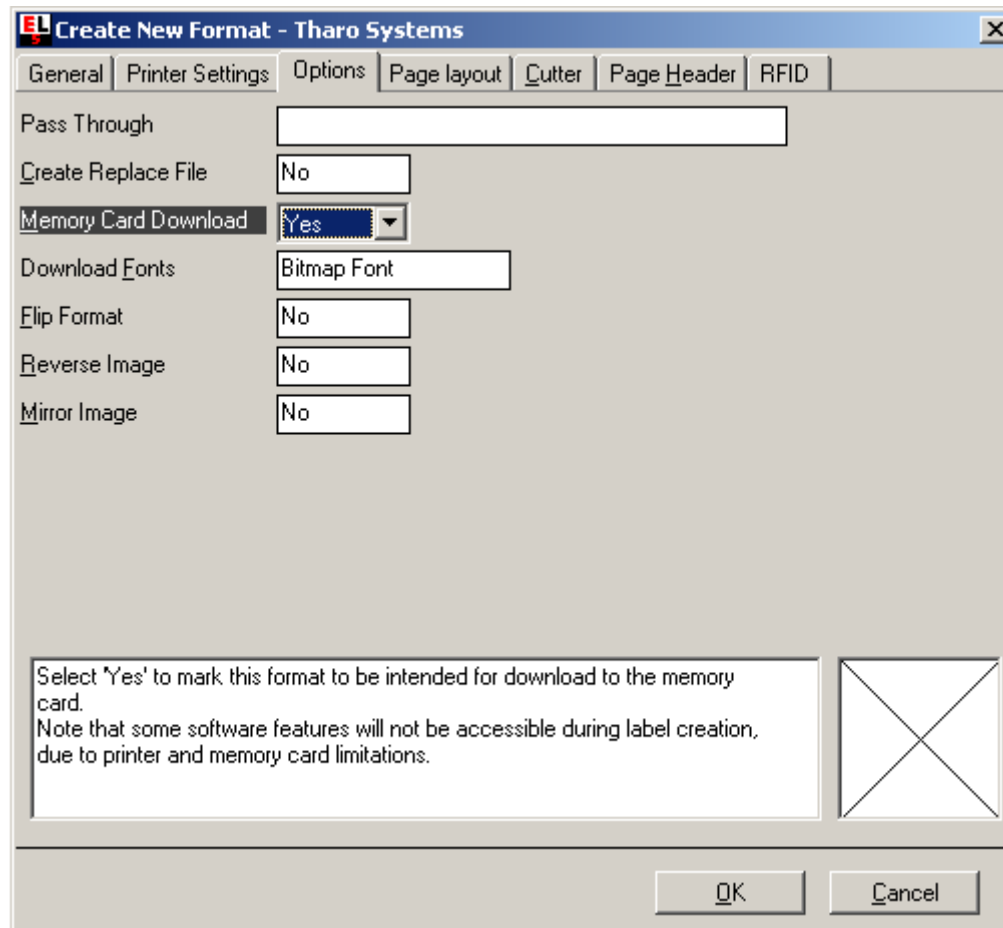


- **Configuring the Label Format for Memory Download**

To create the format click the Options tab in the Create New Format window and set the Memory Card Download option to YES in the Format Specifications. It is very important to set this option correctly before any fields are added to the label format.

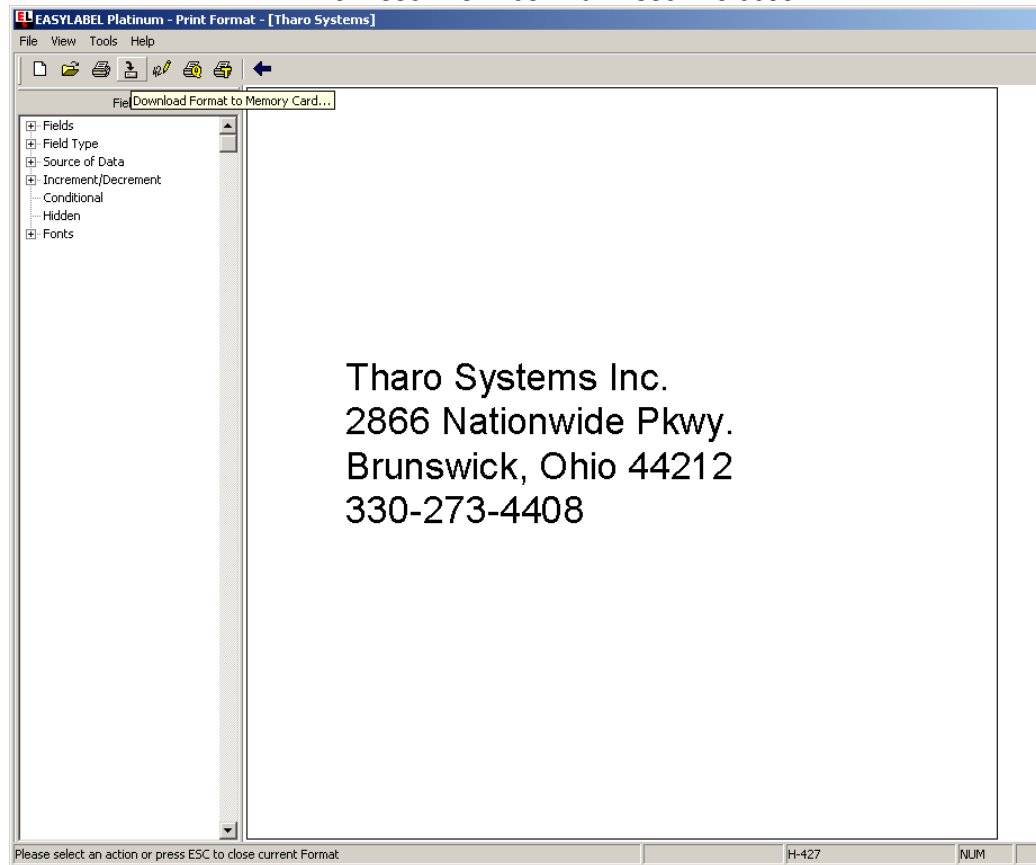
For the Download Fonts option in the image below, you can choose from Graphic Image, Bitmap Font and True Type Font. The Graphic Image option will download the format fields as graphics. Use this option only when there is no variable data on the format. The Bitmap Font option will download a specific size font as a font file with a maximum of 26 font files allowed. Use this option if you have a minimal number of font sizes on the label format. The True Type Font option will download the complete font file to the printer. Use this option when downloading a format with many different size true type text fields.

Another option is to use the Scalable font in your text fields. This is an internal printer font and does not need to be downloaded to the printer. The Download Fonts option does not have any affect when using this font.

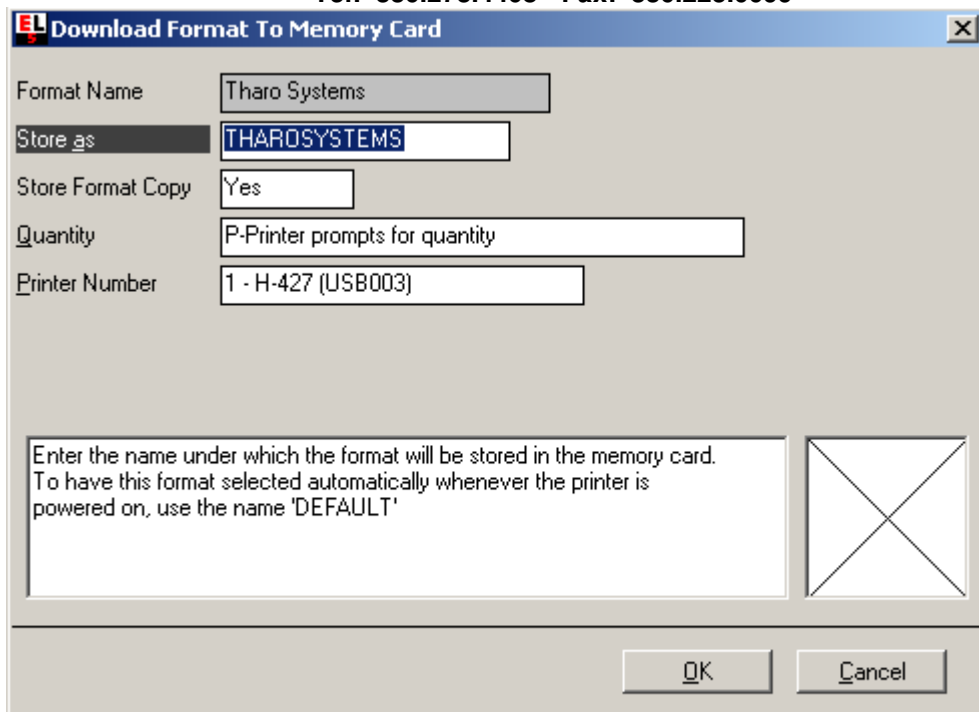


- **Downloading to the H-Series Printer**

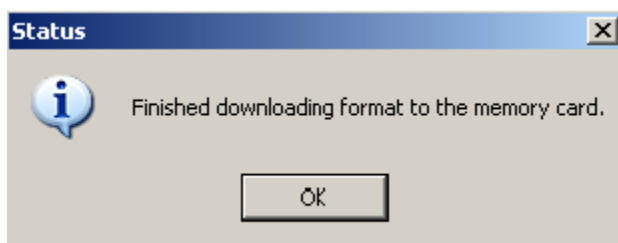
A single format or multiple formats can be downloaded to the printer in one download sequence. To download a single format go through the normal printing process. When you see the Print Request screen click on the Cancel button. Then click the Download To Memory Card icon to download the format and any associated files to the printer memory.



*When the Download Format To Memory Card window opens you can choose a name for your downloaded format; whether you want to create a copy of the format as a text file; how the quantity to print will be handled and to which printer the format will be downloaded. After making your choices click OK and the download process will begin.



After the files are downloaded to the printer a message box will appear on the screen confirming the download is complete.



To download multiple formats to the printer memory click on File | Download Multiple Formats from the EASYLABEL menu. A browse window will open to allow you to choose multiple formats from a specific folder. Hold down the Ctrl key and click each format name to select it. When you are finished click the Open button. At this time you will be given the option to rename your formats one by one or have EASYLABEL automatically name them using the

DOS 8.3 naming convention and then send them to the printer. After you have completed this process follow the instructions above (*) to download formats to the printer memory.

- **Viewing the Contents of the Printer Memory**

It is possible to view files downloaded to the printer, delete individual files from memory or format the printer memory. To perform one of these functions open the EASYLABEL program and press the F2 key or click the Print Queue icon



to open the EASYLABEL Print Queue.

Highlight the printer name and click the Printer Status button. From the Printer Status window click the Memory Card button and the window below will open

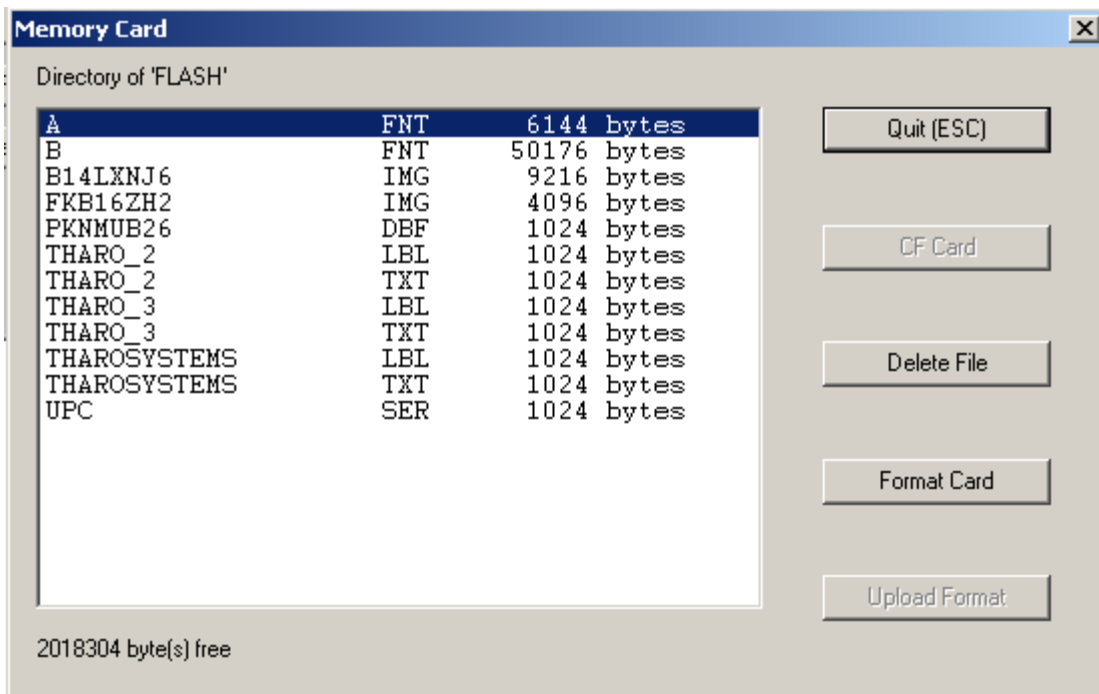
displaying all the files in the printer memory. FNT are font files, IMG are image files, LBL are label format files, DBF are database files, SER are serial files and TXT are the backup files of the label formats.

To delete an individual file click on the file name to highlight it and click the Delete File button.

To format the card click the Format Card button. All files in memory will be erased.

In the upper left corner of the window below, you can see whether you are viewing the files in the flash memory of the printer or on the optional CF card. In the lower left corner of the window below, you can see the available free memory in bytes.

To upload a format from memory back to your PC, click the TXT file name to highlight it and click the Upload Format button. You will be able to transfer the file to your PC as an EASYLABEL label format. Then you can edit and re-download the file to memory if necessary.



- **Printing from the Stand Alone Printer**

Connect a standard PS/2 keyboard to the back of the printer. Power up the printer and you will be prompted to enter Keyboard Mode (Y/N). Be sure the Keyboard Mode is set to the correct language. Detailed language setup instructions are in the printer Users Manual.



Tharo Systems, Inc.
2866 Nationwide Parkway • P.O. Box 798
Brunswick, OH 44212 USA
Tel: 330.273.4408 • Fax: 330.225.0099

If the keyboard is connected and the printer is not displaying the Enter Keyboard Mode prompt, press the F1 key to enter the Keyboard Mode.

To locate a specific format use the arrow keys to scroll through the format names. The format names are listed in alphabetical order. If there are a lot of formats in the memory, a quick way to find the format you are looking for is to press the letter key that corresponds to the first letter of the format name. A format name with that particular letter will be displayed on the front panel of the printer, then scroll using the arrow keys to find your specific format.

Once you have located the correct format press the Enter key. Depending on how the format was designed you will either get a variable data prompt, which you can fill in by typing the data using the keyboard, or a quantity prompt. Press Enter to move forward through the prompts. After printing, pressing the Escape key once will take you back to the first prompt. Pressing the Escape key a second time will take you back to the format names. Pressing the Escape key a third time will allow you to exit Keyboard Mode.

In conclusion, the H-Series printer makes it easy to print labels without a PC attached. The files can be created at one location, downloaded to a CF card and the CF card can be sent to a second location where all that is needed to print labels is an H-Series printer and a keyboard. It is even possible to print labels from the printer without a keyboard, provided there is no variable data on the format.

For more advanced stand alone printing information please see our EASYLABEL Replace Files White Paper at <http://www.tharo.com/replace-files.pdf>