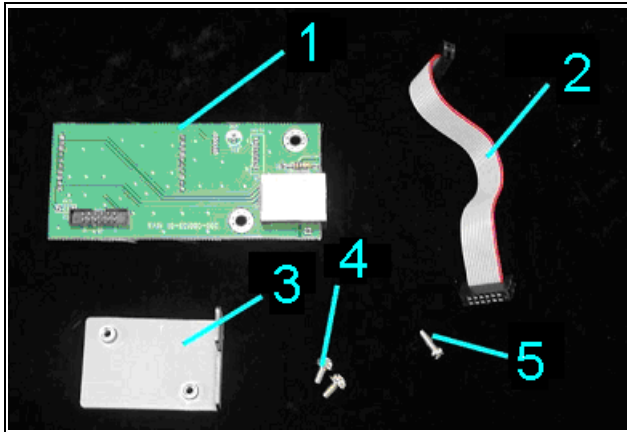


## Components:



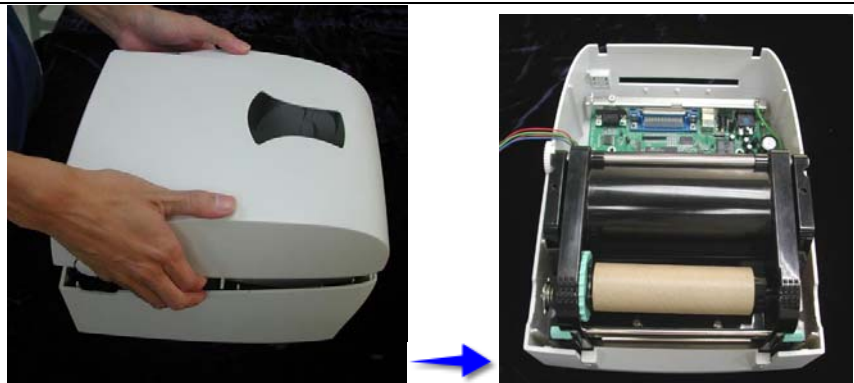
1	Ethernet Module
2	Connector Cable
3	Support Stand
4	Screws (Machine 3x6) x 2
5	Screw (Tap 3x8) x 1

## Installation:

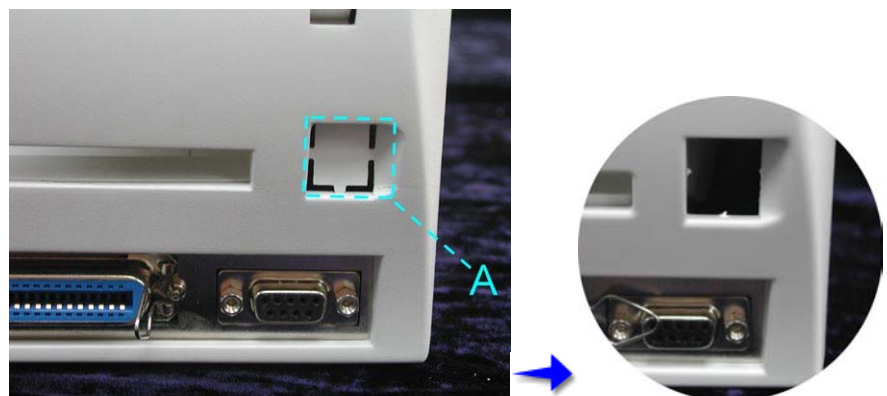
1. Disconnect the printer from the power source and remove both screws from the bottom of the printer.



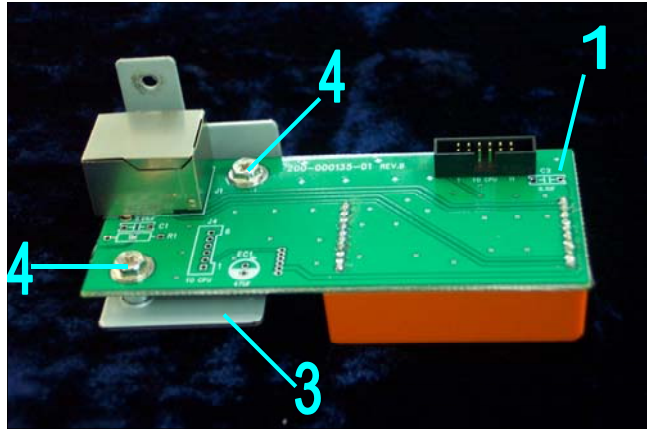
2. Push in and lift the sides of the printer to remove the top cover.



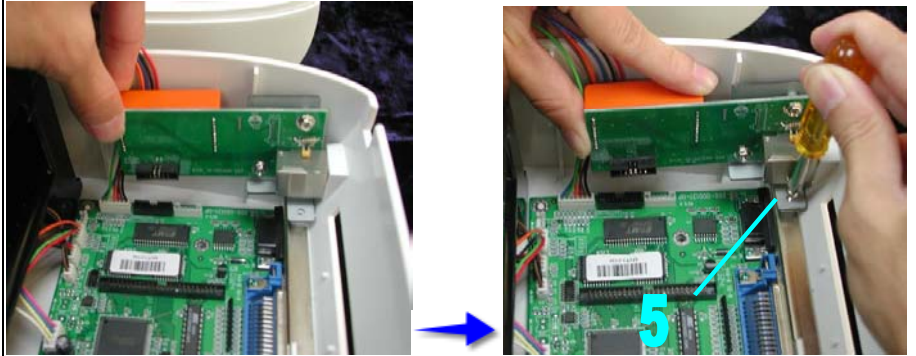
3. Use a knife or screwdriver to remove the spare opening (A) on the back of the printer.



4. Secure the support stand (3) to the Ethernet module (1) using the two machine 3x6 screws (4).

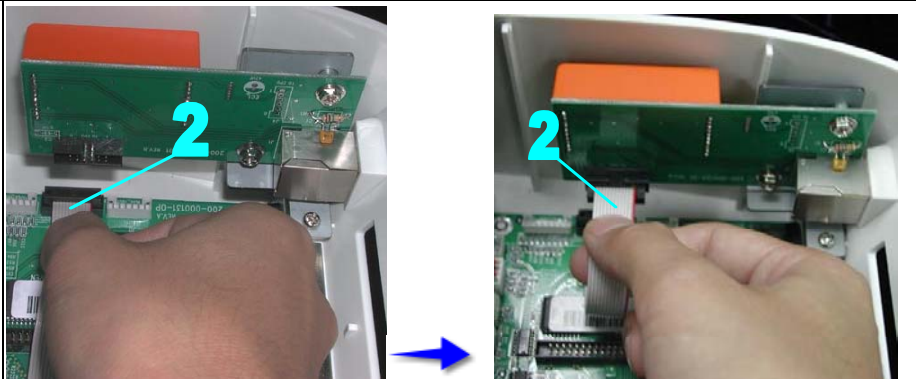


5. Align the Ethernet connector with the opening you made on the back of the printer and use the remaining screw (5) to secure the module to the printer as shown.



6. Connect one end of the connector cable (2) to the printer's main board and the other end to the Ethernet module.

*Note: Bend the cable inward when making the connection to prevent interference with the main board.*

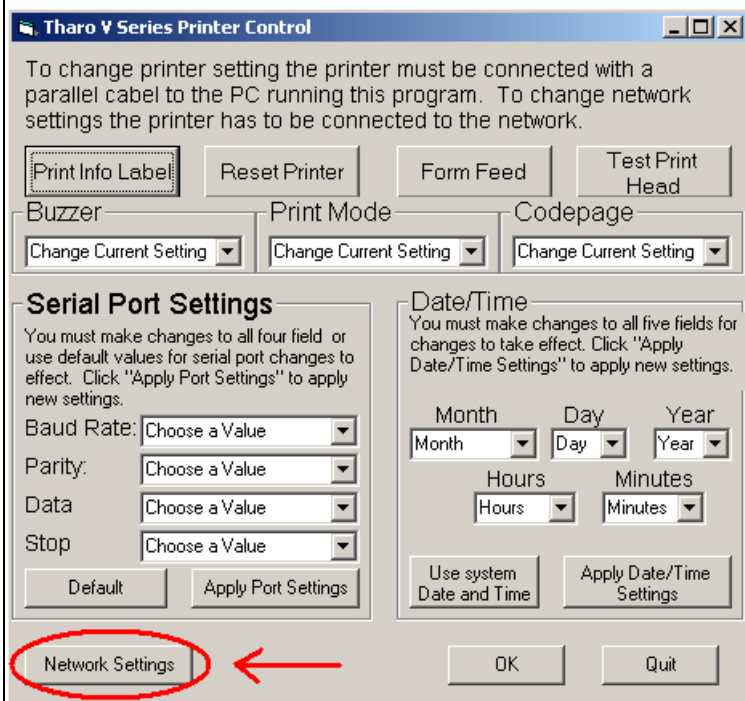


7. To complete the installation replace the top cover and the screws on the bottom of the printer.



## Network Settings:

1. Start the Tharo V Series Printer Control program. Then click the 'Network Settings' button at the bottom of the main screen.



2. At the IP Setup screen, select the printer using the ethernet module's MAC or IP address. After you select a device from the list you may change it's current settings. Click 'Apply IP Settings' for changes to take effect.

